

2026 DRINKING WATER QUALITY REPORT

A regional publication on the source, treatment and distribution of water provided by Central Iowa Water Works and Des Moines Water Works.



Clean, reliable water for central Iowa — every day. Providing safe, high-quality water to 600,000 central Iowans is a responsibility we take seriously, and we are proud to deliver water that meets all state and federal drinking water standards. This annual Water Quality Report is to inform you about the water you use every day. You'll find information about our source waters, treatment processes, water quality monitoring and testing results, as well as details about regulatory compliance and detected substances. We continue investing in infrastructure, technology and the expertise of our staff to ensure reliable treatment and delivery of safe, affordable drinking water for our community now and into the future. **Here's to another year of clean, dependable H2O delivered right to your tap.**

Des Moines
Water Works
Water You Can Trust for Life

CIWW
CENTRAL IOWA WATER WORKS
STRONGER TOGETHER

WHERE DOES YOUR DRINKING WATER COME FROM?

The Raccoon and Des Moines Rivers are the natural resources used to make clean drinking water for 600,000 central Iowans. Upstream land use practices – agricultural and urban – have a direct effect on water quality and quantity for downstream users. All Iowans should **Think Downstream** and consider how they can help make Iowa's water safe for drinking and recreation.



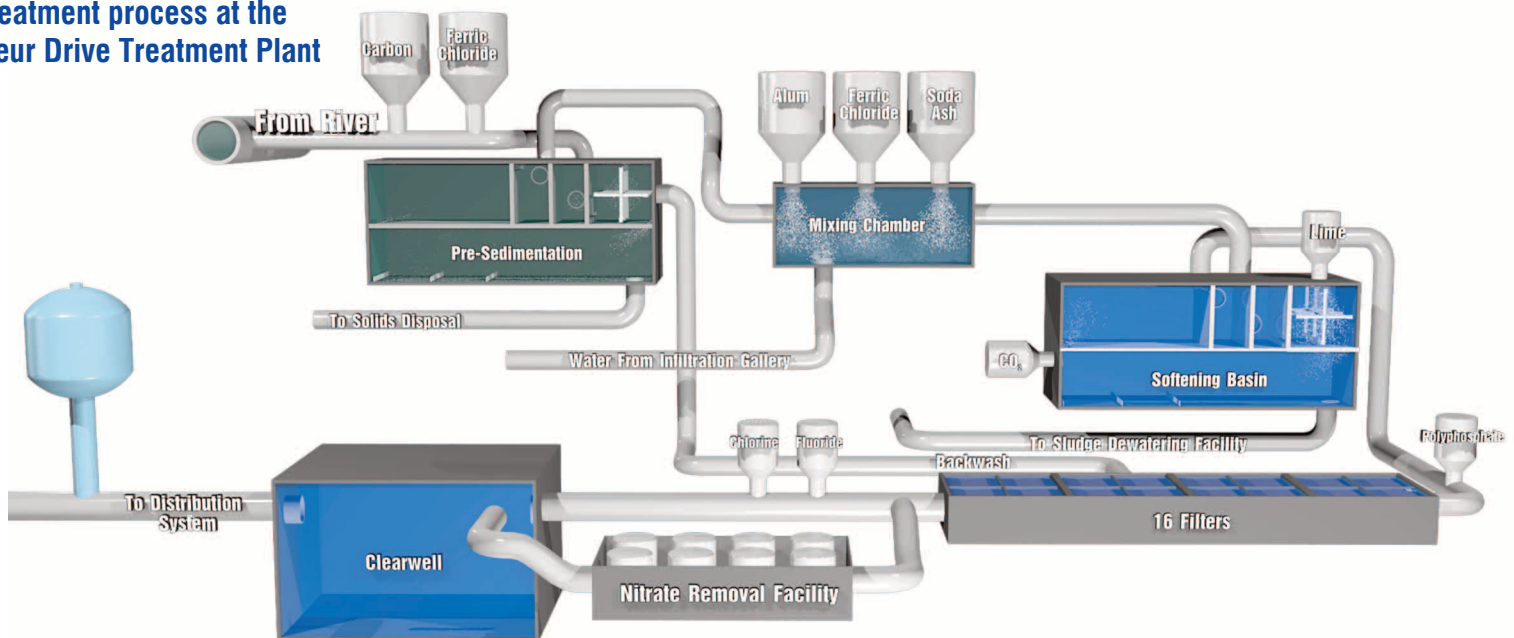
Des Moines Water Works (DMWW) operates three water treatment plants for Central Iowa Water Works. Each treatment plant involves a multi-barrier approach to ensure the safety of your drinking water. This includes source water monitoring, riverbank filtration, treatment processes of softening, filtration and disinfection, as well as distribution system monitoring and maintenance.

The **L.D. McMullen Water Treatment Plant**, located southwest of the metro area, treats up to 25 million gallons of water from six radial collector wells and one horizontal well along the Raccoon River, and serves customers in southern Des Moines, Waukee and parts of Warren Water District, Clive, Urbandale and West Des Moines. The collection elements are located in the coarse sand and gravel formation beneath the river. The shallow groundwater receives natural filtration prior to entry into the wells. Water from Maffitt Reservoir and Crystal Lake are available for blending and additional water sources for treatment.

Saylorville Water Treatment Plant, located in northern Polk County, serves water to residents north of Des Moines. This facility treats up to 10 million gallons of water from two radial collector wells along the Des Moines River and utilizes ultra-filtration and reverse osmosis to soften and treat the water.

All other areas in Des Moines Water Works' service area receive water from the **Fleur Drive Treatment Plant**. This plant treats up to 75 million gallons of water pumped from one of three sources: Raccoon River, Des Moines River and an Infiltration Gallery (a series of underground pipes located throughout Water Works Park adjacent to the Raccoon River).

Treatment process at the Fleur Drive Treatment Plant



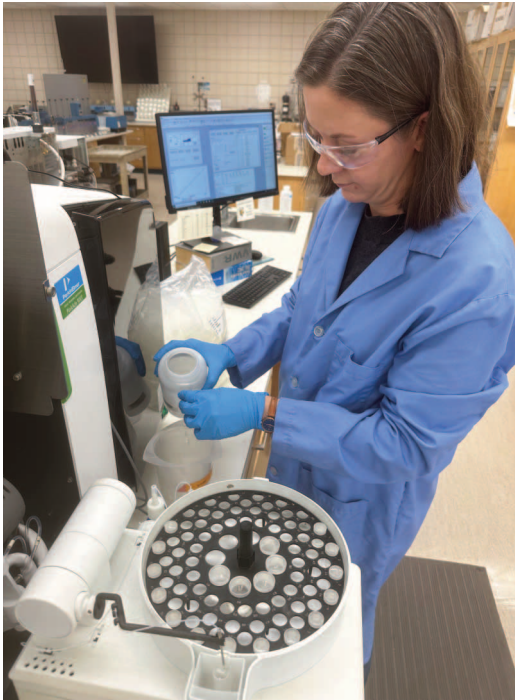
Once treated, 1,400 miles of underground pipe, 10,800 fire hydrants, 10,900 valves, 10 water storage tanks and 10 booster pumping stations distribute water to homes and businesses in Des Moines and surrounding communities.

HOW WE SAFEGUARD YOUR WATER?

Throughout the treatment process, chemists and a microbiologist in Central Iowa Water Works' state-certified laboratory perform 100-150 tests each day to ensure the highest quality water is produced. An additional series of 50-60 daily tests on the untreated water sources allows laboratory staff to identify any necessary changes needed in the treatment process before the water enters the treatment plants.

DMWW monitors and tests for emerging and unregulated contaminants to stay ahead of potential health risks, including cyanotoxins produced by cyanobacteria, Per- and Poly-fluoroalkyl Substances (PFAS), neonicotinoids, and pharmaceutical and personal care products (PPCP).

The sources of drinking water (both tap water and bottled water) include rivers, lakes, streams, ponds, reservoirs, springs and wells. As water travels over the surface of the land or through the ground, it dissolves naturally-occurring material and, in some cases, radioactive material, and can pick up substances resulting from the presence of animals or humans. Contaminants that may be present in raw source water include:



DMWW's chemist Lisa Morarend tests water samples for lead in the onsite state-certified laboratory.

Inorganic Contaminants such as salts and metals, which can occur naturally or come from urban stormwater runoff, industrial or domestic wastewater discharges, oil and gas production, mining or farming.

Organic Chemicals including synthetic and volatile organic chemicals, which are agriculture, industrial and petroleum process byproducts and can also come from gas stations, urban stormwater runoff and septic systems.

Microorganisms such as viruses and bacteria, which may come from agricultural livestock operations, sewage treatment plants, septic systems and wildlife.

Pesticides and Herbicides which may come from agriculture and urban stormwater runoff.

Radioactive Contaminants which can occur naturally or result from oil and gas production and mining activities.

DEFINITIONS AND ABBREVIATIONS

Action Level (AL) The concentration of a contaminant which, if exceeded, triggers treatment or other requirements which a water system must follow.

Coliform Bacteria that are naturally present in the environment and are used as an indicator that other, potentially harmful, waterborne pathogens may be present or that a potential pathway exists through which contamination may enter the drinking water (RTCR).

E.Coli Bacteria whose presence indicates that the water may be contaminated with human or animal wastes.

Level Found The highest amount found in the water or the average of all samples analyzed, depending on the regulation. If multiple samples were tested in 2025, the lowest and highest detected values are listed under Range of Detections.

LRAA Locational running annual average.

mg/L Milligrams per liter, or parts per million (ppm). Parts of contaminant per million parts of water. One part per million is equivalent to a single penny in ten thousand dollars.

MCL The maximum contaminant level, the highest level of a substance allowed in drinking water.

MCLG The MCL Goal, the level of a substance where there is no known or expected health risk. MCLGs allow for a margin of safety. MCLs are set as close to MCLGs as feasible using the best available treatment processes.

NA Not applicable.

ND Not detected.

ng/L Nanograms per liter, or parts per trillion (ppt). Parts of contaminant per trillion parts of water. One part per trillion is equivalent to a single penny in ten billion dollars.

NTU Nephelometric turbidity units.

pCi/L Picocuries per liter, a measure of radioactivity.

RTCR Revised Total Coliform Rule

TT Treatment Technique. Certain treatment processes are required to reduce the level of turbidity in the drinking water. Turbidity must not ever exceed 1 NTU, and must be less than 0.3 NTU 95% of the time.

Turbidity Turbidity is a measure of cloudiness of the water. It is monitored because it is a good indicator of the effectiveness of the filtration system.

µg/L Micrograms per liter, or parts per billion (ppb). Parts of contaminant per billion parts of water. One part per billion is equivalent to a single penny in ten million dollars.

DRINKING WATER AND HEALTH INFORMATION

Drinking water, including bottled water, may reasonably be expected to contain at least small amounts of some contaminants. The presence of contaminants does not necessarily indicate that water poses a health risk.

Some people may be more vulnerable to contaminants in drinking water than the general population. Immuno-compromised persons such as persons with cancer undergoing chemotherapy, persons who have undergone organ transplants, people with HIV/AIDS or other immune system disorders, some elderly, and infants can be particularly at risk from infections. These people should seek advice from their health care providers about drinking water. Information about contaminants and potential health effects can be obtained by contacting the **Safe Drinking Water Hotline**.

EPA Safe Drinking Water Hotline

(800) 426-4791 or <http://water.epa.gov/drink>

NITRATE

Nitrate in drinking water at levels above 10 parts per million (ppm) is a health risk for infants less than six months of age. High nitrate levels in drinking water can cause blue baby syndrome. If you are caring for an infant, you should ask for advice from your healthcare provider. Nitrate levels may rise quickly for short periods of time because of groundwater conditions and agricultural activity. Des Moines Water Works uses a variety of strategies to keep the treated tap water below 10 ppm. These strategies include source water blending, and if necessary, removal of nitrate using a treatment process known as ion exchange. Despite frequently elevated nitrate levels in the Raccoon and Des Moines Rivers, Des Moines Water Works' treated water has not exceeded the 10 ppm standard since nitrate removal was implemented in 1992.

LEAD

If present, elevated levels of lead can cause serious health problems, especially for pregnant women and young children. Des Moines Water Works minimizes the potential for exposure to lead in drinking water by following a corrosion control program approved by the Iowa Department of Natural Resources. Lead can get into drinking water from materials and components associated with private service lines and home plumbing. When your water has been sitting for several hours, you can further minimize the potential for lead exposure by flushing your tap for 30 seconds to 2 minutes before using water for drinking or cooking. If you are concerned about lead in your water, you may wish to have your water tested. Information on lead in drinking water, testing methods, and steps you can take to minimize exposure are available from the Safe Drinking Water Hotline.

LITHIUM

Naturally occurring metal that may concentrate in brine waters; lithium salts are used as pharmaceuticals, used in electrochemical cells, batteries, and in organic syntheses.

PFAS

PFAS are a group of synthetic chemicals used in a wide range of consumer products and industrial applications including: non-stick cookware, water-repellent clothing, stain-resistant fabrics and carpets, cosmetics, firefighting foams, electroplating, and products that resist grease, water and oil. PFAS are found in the blood of people and animals and in water, air, fish, and soil at locations across the United States and the world.

RADON

Radon is a naturally-occurring gas present in some groundwater. Inhaled radon has been linked to lung cancer and may pose a health risk when inhaled after the release from water into the air. This inhalation could occur during showering, bathing, washing dishes, or washing clothes. The radon gas release from drinking water is a relatively small part of the total radon found in air. One major source of radon gas is from the soil, where the gas can seep through the foundations of homes. It is not clear whether ingested (i.e. taken through the mouth) radon contributes to cancer or other adverse health conditions. If you are concerned about radon in your home, tests are available to determine the total exposure level. For additional information on home testing contact Polk County Health Department: (515) 286-3798.

SOURCE WATER ASSESSMENT

Des Moines Water Works obtains water from one or more surface waters. Surface water sources are susceptible to sources of contamination or pollution within the Raccoon and Des Moines River watersheds.

Surface Water Name	Susceptibility
Crystal Lake	High
Des Moines River	High
Maffitt Reservoir	High
Raccoon River	High

Water is also obtained from aquifers. The Alluvial Aquifer was determined to be highly susceptible to contaminations because the characteristics of the aquifer and overlying materials provide little protection from contamination at the land surface. The Alluvial wells will be highly susceptible to surface contamination such as leaking underground storage tanks, contaminant spills, and excess fertilizer application.

The Cambrian-Ordovician Aquifer was determined to have low susceptibility to contamination because the characteristics of the aquifer and overlying materials provide natural protection from contaminants at the land surface.

To obtain a copy of the Source Water Assessment, call (515) 283-8700 to request a printed copy.



Sampling technician Bill Blubaugh takes samples from the Raccoon River.

PUBLIC MEETING AND UTILITY CONTACT INFORMATION

Check with the city/entity for the most up to date information.

CITY OF ALLEMAN

Public Meeting:

2nd Monday of the month at 7:00 pm
Alleman City Hall
14000 NE 6th Street · Alleman, IA 50007

Contact Information:

Des Moines Water Works
(515) 283-8700 · customerservice@dmww.com

CITY OF ANKENY

Public Meeting:

1st & 3rd Monday of each month at 5:30 pm
Kirkendall Library
1250 SW District Drive · Ankeny, IA 50023

Contact Information:

Customer Service
410 West 1st Street · Ankeny, IA 50023
(515) 963-3565 · customerservice@ankenyiowa.gov

BERWICK WATER ASSOCIATION

Public Meeting:

Annual meeting and as needed
5825 NE Berwick Drive · Berwick, IA 50032

Contact Information:

Des Moines Water Works Customer Service
(515) 283-8700 · customerservice@dmww.com

CITY OF BONDURANT

Public Meeting:

1st & 3rd Monday of each month at 6:00 pm
Bondurant City Hall
200 2nd Street NE · Bondurant, IA 50035

Contact Information:

John Horton, Public Works Director
(515) 967-2418 · jhorton@cityofbondurant.com

CITY OF CLIVE

Public Meeting:

2nd & 4th Thursday of each month at 6:00 pm
Clive City Hall
1900 NW 114th Street · Clive, IA 50325

Contact Information:

Jeff May, Public Works Director
2123 NW 111th Street · Clive, IA 50325
(515) 223-6231 · jmay@cityofclive.com

CITY OF CUMMING

Public Meeting:

2nd & 4th Monday each month at 7:00 pm
Cumming City Hall
649 N 43rd Street · Cumming, IA 50061

Contact Information:

Cumming City Hall
(515) 981-9214
Des Moines Water Works Customer Service
(515) 283-8700 · customerservice@dmww.com

DES MOINES WATER WORKS

Public Meeting:

4th Tuesday of each month at 3:30 pm
Des Moines Water Works
2201 George Flagg Parkway · Des Moines, IA 50321

Contact Information:

Des Moines Water Works Customer Service
(515) 283-8700 · customerservice@dmww.com

CITY OF EARLHAM

Public Meeting:

2nd Monday of each month at 7:00 pm
Earlham City Hall
140 South Chestnut Avenue · Earlham, IA 50072

Contact Information:

Gary Coffman, Public Works Supervisor
(515) 758-2281 · earlhamutilities@earlhamiowa.org

CITY OF JOHNSTON

Public Meeting:

1st & 3rd Monday of each month at 7:00 pm
Johnston City Hall
6221 Merle Hay Road · Johnston, IA 50131

Contact Information:

Shane Kinsey
6400 NW Beaver Drive · Johnston, IA 50131
(515) 278-0822 · skinsey@cityofjohnston.com

CITY OF NORWALK

Public Meeting:

1st & 3rd Thursday of each month at 6:00 pm
Norwalk City Hall
705 North Avenue · Norwalk, IA 50211

Contact Information:

Wayne Schwartz, P.E., Public Works Director
(515) 981-9527 · wschwartz@norwalk.iowa.gov

CITY OF PLEASANT HILL

Public Meeting:

2nd & 4th Tuesday of each month at 6:00 pm
Pleasant Hill City Hall
5160 Maple Drive, Suite A · Pleasant Hill, IA 50317

Contact Information:

Pleasant Hill Public Works
(515) 262-9465
Des Moines Water Works Customer Service
(515) 283-8700 · customerservice@dmww.com

CITY OF RUNNELLS

Public Meeting:

2nd Tuesday of each month at 7:00 pm
Community Center
108 Brown Street · Runnells, IA 50237

Contact Information:

Runnells City Hall
(515) 966-2042
Des Moines Water Works Customer Service
(515) 283-8700 · customerservice@dmww.com

URBANDALE WATER UTILITY

Public Meeting:

Meets monthly · Call 278-3940 for information
Urbandale Water Utility
3720 86th Street · Urbandale, IA 50322

Contact Information:

Neil Weiss, General Manager
(515) 278-3940 · nweiss@urbandalewater.org

WARREN WATER DISTRICT

Public Meeting:

3rd Monday of each month at 6:00 pm
Warren Water District
1204 East 2nd Avenue · Indianola, IA 50125

Contact Information:

Matt Van Wyk, System Manager
(515) 962-1200 · wwd@warrenwaterdistrict.com

CITY OF WAUKEE

Public Meeting:

1st & 3rd Monday each month at 5:30 pm
Waukee City Hall
230 W. Hickman Road · Waukee, IA 50263

Contact Information:

Rudy Koester, Public Works Director/City Engineer
(515) 978-7920 · rkoester@waukee.org
Waukee Utility Customer Service
(515) 978-5502

CITY OF WINDSOR HEIGHTS

Public Meeting:

1st & 3rd Monday each month at 6:00 pm
Windsor Heights City Hall
1133 66th Street · Windsor Heights, IA 50324

Contact Information:

Windsor Heights City Hall
(515) 279-3662
Des Moines Water Works Customer Service
(515) 283-8700 · customerservice@dmww.com

Des Moines
Water Works
Water You Can Trust for Life



2025 WATER QUALITY RESULTS

Water Treatment Plant Monitoring

Before water can be delivered to your home, it must first be analyzed by certified laboratories at Central Iowa Water Works/Des Moines Water Works' Fleur Drive Treatment Plant and the State Hygienic Laboratory. Results for 2025 in this report include samples taken as water leaves the three treatment plants that Des Moines Water Works manages and from samples obtained from the various water distribution systems supplied with water by Des Moines Water Works.

2025 LAB RESULTS	UNITS	MCL	MCLG	Fleur Drive Treatment Plant			L.D. McMullen Water Treatment Plant			Saylorville Water Treatment Plant			Met Standard	COMMON SOURCES OF CONTAMINANT
				YEAR TESTED	LEVEL FOUND	RANGE OF DETECTIONS	YEAR TESTED	LEVEL FOUND	RANGE OF DETECTIONS	YEAR TESTED	LEVEL FOUND	RANGE OF DETECTIONS		
WATER CLARITY														
Turbidity	NTU	TT	N/A	2025	0.14	0.03-0.14	2025	0.25	0.02-0.25	2025	0.07	0.02-0.07	✓	Soil runoff
ORGANIC CONTAMINANTS														
Atrazine	µg/L	3	3	2025	ND	N/A	2025	ND	N/A	2023	ND	N/A	✓	Agriculture activity
Cis-1,2 Dichloroethylene	µg/L	70	70	2025	ND	N/A	2025	ND	N/A	2023	ND	N/A	✓	Discharge from industrial chemical factories
Metolachlor*	µg/L	N/A	N/A	2025	0.1	N/A	2025	ND	N/A	2023	ND	N/A	N/A	Agriculture activity
Dalapon	µg/L	200	200	2025	ND	N/A	2025	0.2	N/A	2023	ND	N/A	✓	Herbicide usage
PFBA**	ng/L	N/A	N/A	2025	2.6	ND-2.6	2025	ND	N/A	2025	ND	N/A	N/A	Discharge from industrial chemical factories
INORGANIC CONTAMINANTS														
Fluoride	mg/L	4	4	2025	0.80	0.17-0.80	2025	0.87	0.17-0.87	2025	0.76	0.13-0.76	✓	Additive for strong teeth; erosion of natural deposits; discharge from fertilizer factories
Nitrate [as N]	mg/L	10	10	2025	9.17	2.59-9.17	2025	9.04	2.70-9.04	2025	4.82	ND-4.82	✓	Agriculture activity; leaching from septic tanks; sewage; erosion of natural deposits
Sodium	mg/L	N/A	N/A	2025	53.38	14.35-53.38	2025	28.06	11.98-28.06	2025	20.63	13.76-20.63	✓	Erosion of natural deposits
Barium	mg/L	2	2	2021	ND	N/A	2021	ND	N/A	2020	0.07	N/A	✓	Metal refinery and drilling waste discharge; erosion of natural deposits
				YEAR TESTED	ANNUAL REMOVAL RATIO	MINIMUM REMOVAL REQUIREMENT	YEAR TESTED	ANNUAL REMOVAL RATIO	MINIMUM REMOVAL REQUIREMENT	YEAR TESTED	ANNUAL REMOVAL RATIO	MINIMUM REMOVAL REQUIREMENT		COMMON SOURCES OF CONTAMINANT
TREATMENT PLANT														
Total Organic Carbon	mg/L	TT	N/A	2025	2.86	1	2025	2.92	1	2025	3.76	1	✓	Naturally present in the environment

*There currently is not drinking water standard for Metolachlor. **PFBA is Perfluoro-n-butanoic acid. There currently is not drinking water standard for it.

DES MOINES WATER WORKS operates three Aquifer Storage and Recovery (ASR) wells, the CITY OF ANKENY operates two ASR wells and the CITY OF WAUKEE operates one ASR well. Treated drinking water is injected into wells during low demand cold weather months, and recovered for use during high demand warm-weather months to help limit the use of poor quality source water and meet customer demand. Testing data unique to this water can be seen on the chart below.

2025 ASR LAB RESULTS

ASRs met all standards ✓	UNITS	MCL	MCLG	Louise P. Moon ASR Well			L.D. McMullen ASR Well			Army Post Road ASR Well			Ankeny ASR Well 4			Ankeny ASR Well 6		
				YEAR TESTED	LEVEL FOUND	RANGE OF DETECTIONS	YEAR TESTED	LEVEL FOUND	RANGE OF DETECTIONS	YEAR TESTED	LEVEL FOUND	RANGE OF DETECTIONS	YEAR TESTED	LEVEL FOUND	RANGE OF DETECTIONS	YEAR TESTED	LEVEL FOUND	RANGE OF DETECTIONS
PARAMETER																		
Alpha Emitters	pCi/L	15	0	2025	4.5	N/A	2024	5.2	N/A	2025	6.6	N/A	2023	8.0	N/A	2025	8.4	N/A
Arsenic	µg/L	10	0	2025	ND	N/A	2025	ND	N/A	2025	2	ND-2	2024	1	ND-1	2025	ND	N/A
Combined Radium	pCi/L	5	0	2025	1.2	N/A	2024	ND	N/A	2025	1.7	N/A	2024	1.6	N/A	2024	1.6	N/A
Dichloromethane	mg/L	0.01	0	2025	ND	N/A	2025	ND	N/A	2025	ND	N/A	N/A	N/A	N/A	N/A	N/A	N/A
Fluoride	mg/L	4	4	2025	1.37	0.69-1.37	2025	0.87	0.29-0.87	2025	1.54	0.73-1.54	2023-24	1.2	0.8-1.2	2023-24	1.2	0.8-1.2
Nitrate [as N]	mg/L	10	10	2025	5.90	1.05-5.90	2025	8.83	4.74-8.83	2025	6.77	0.69-6.77	2025	2.29	0.60-2.29	2025	2.29	0.60-2.29
Sodium	mg/L	N/A	N/A	2025	86	20-86	2025	28	13-28	2025	97	24-97	2023-24	54	23-54	2023-24	54	23-54
Radon	pCi/L	N/A	N/A	2025	70	N/A	2024	58	N/A	2025	74	N/A	N/A	N/A	N/A	N/A	N/A	N/A
Uranium	µg/L	30	0	2025	ND	N/A	2024	1.3	N/A	2025	1.8	N/A	N/A	N/A	N/A	N/A	N/A	N/A

Waukee ASR Well 2	UNITS	MCL	MCLG	YEAR TESTED	LEVEL FOUND	RANGE OF DETECTIONS	PARAMETER	COMMON SOURCES OF CONTAMINANT	PARAMETER	COMMON SOURCES OF CONTAMINANT
PARAMETER							Alpha Emitters	Erosion of natural deposits	Nitrate [as N]	Agriculture activity; leaching from septic tanks; sewage; erosion of natural deposits
Alpha Emitters	pCi/L	15	0	2025	3.5	1.2-3.5	Arsenic	Erosion of natural deposits	Radon	Breakdown of uranium in the ground
Arsenic	µg/L	10	0	2025	ND	N/A	Atrazine	Agriculture activity	Sodium	Erosion of natural deposits
Combined Radium	pCi/L	5	0	2025	1.1	ND-1.1	Combined Radium	Erosion of natural deposits	Uranium	Erosion of natural deposits
Dichloromethane	mg/L	0.01	0	2025	ND	N/A	Dichloromethane	Discharge from drug and chemical factories		
Fluoride	mg/L	4	4	2025	1.30	0.81-1.30	Fluoride	Additive for strong teeth; erosion of natural deposits; discharge from fertilizer factories		
Nitrate [as N]	mg/L	10	10	2025	4.9	1.5-4.9				
Sodium	mg/L	N/A	N/A	2025	72	28-72				

Water Distribution System Monitoring

Water is regularly monitored throughout community distribution systems for disinfectant, disinfection byproducts, bacteria, lead and copper. The table below shows the results of this monitoring.

2025 DISTRIBUTION RESULTS	Total Trihalomethanes (TTHM) (µg/L)		Haloacetic Acids (HAA5) (µg/L)		Lead (µg/L)			Copper (mg/L)			Coliform Bacteria (positive)		Chlorine Disinfectant (mg/L)	
	Level Found	Range of Detections	Level Found	Range of Detections	Year Tested	90% of test levels were less than	Range of Detections	Year Tested	90% of test levels were less than	Range of Detections	Monthly Samples	Positive Samples	Running Annual Average	Range
Des Moines*	56	41-77	11	9-17	2024	ND	ND-21 ¹	2024	ND	ND-0.072	151	2 ²	1.20	0.27-2.18
Ankeny	49	32-66	7	ND-10	2025	ND	ND	2025	0.042	ND-0.056	70	0	0.90	0.15-1.45
Bondurant	38	29-45	25	16-40	2024	1.3	ND-9	2024	0.008	ND-0.011	8	0	2.20	1.14-2.61
Clive	60	46-77	10	7-11	2025	ND	ND-5	2025	ND	ND-0.026	20	0	0.90	0.38-1.37
East Dallas Water	33	19-42	5	ND-10	2024	ND	ND-5	2024	ND	ND	1	1 ²	2.50	2.10-2.80
Earlham	29	N/A	8	N/A	2023	2.0	ND-2	2023	0.010	ND-0.010	2	0	1.81	1.50-2.52
Johnston	36	17-55	24	15-45	2025	ND	ND-1	2025	0.034	ND-0.099	25	0	0.80	0.20-1.30
Norwalk	76	60-110	12	7-18	2025	ND	ND-15	2025	0.022	ND-0.044	10	0	1.00	0.42-1.51
SE Polk Rural Water**	69	42-94	11	6-15	2024	ND	ND-28 ¹	2024	ND	ND-0.027	9	0	1.00	0.33-2.16
Urbandale	70	51-99	9	6-11	2024	ND	ND-44 ¹	2024	ND	ND	50	1 ²	0.80	0.35-1.36
Warren Water District	50	31-63	12	ND-16	2023	ND	ND-7	2023	0.022	ND-0.046	20	0	2.40	1.80-3.00
Waukee	61	41-92	8	ND-12	2025	ND	ND	2025	ND	ND-0.028	30	0	1.00	0.34-1.40

*Includes water supplied to Alleman, Berwick, Cumming, Pleasant Hill, Unincorporated Polk County and Windsor Heights. **Includes water supplied to Runnells and eastern portions of Pleasant Hill. ¹One sample over the Action Level (AL) of 15 µg/L. ²Sample tested positive for coliform bacteria. Repeat samples indicated bacteria were not present, and the water was determined to be safe to consume.

Unregulated Contaminants

The U.S. Environmental Protection Agency required some water systems and cities to take samples in 2025 for an assessment monitoring program for the Unregulated Contaminant Monitoring Rule 5 (UCMR5). The EPA will review the findings of this nationwide assessment to determine if any new regulations are needed.

Lithium (µg/L)		
SYSTEM	Year Tested	Range
Johnston	2025	14-33
Waukee	2025	30-34